

The role of the HRC

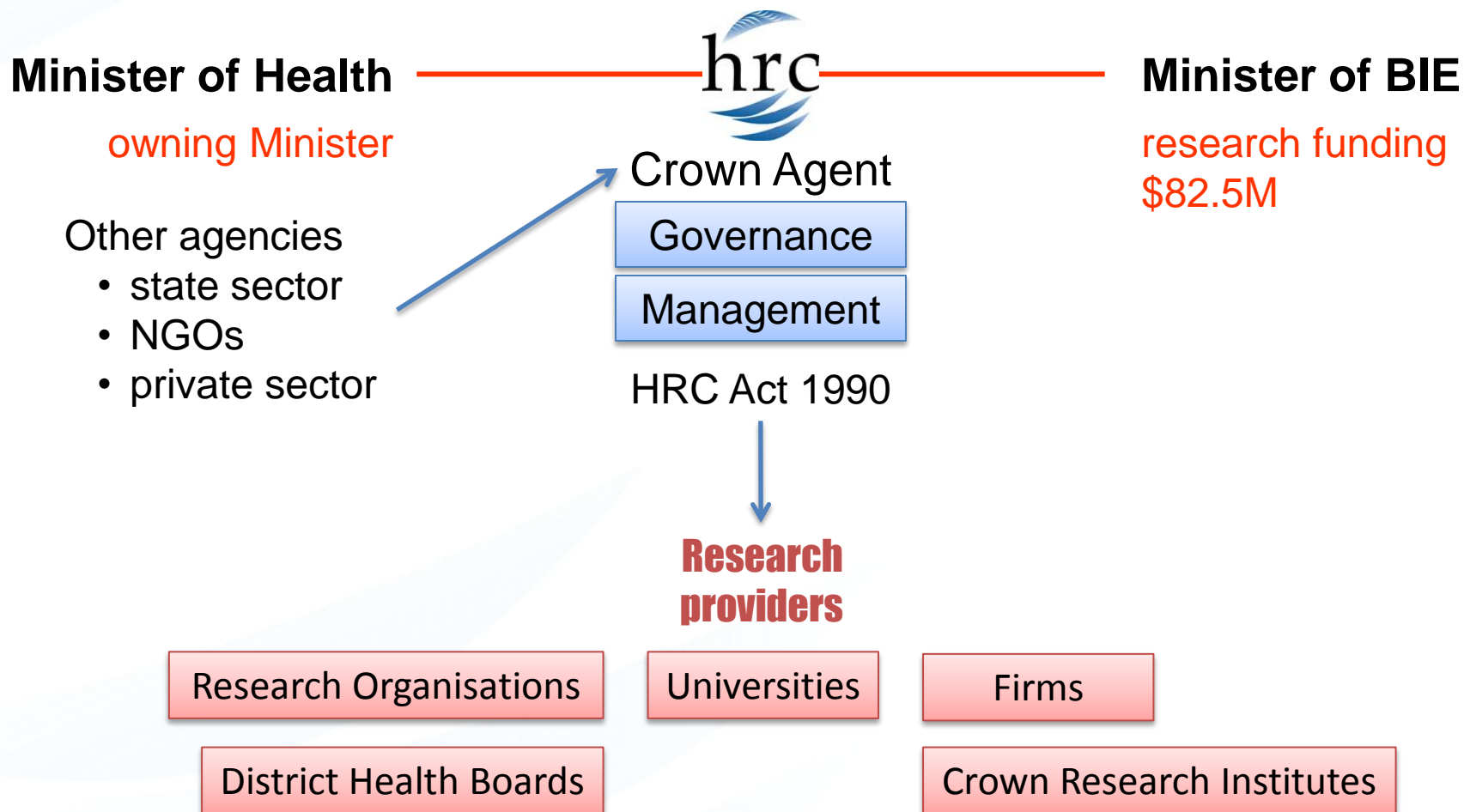
Role of the HRC

- Responsible for the majority of Government's investment in health research
 - investments also by MBIE and Marsden Fund
- Links science sector with health sector
- Support
 - investigator initiated research
 - targeted calls for research
 - health research workforce development

Current imperatives

- opportunities for front-line clinicians to be involved in meaningful research... enriching their careers ... encouraging retention
- research ... to improve value for money through improved health outcomes and service delivery, and produce economic gain
- ... knowledge transfer pathways to ensure adoption of relevant research results from the health and disability sector

Key relationships



Snapshot 1/04/11

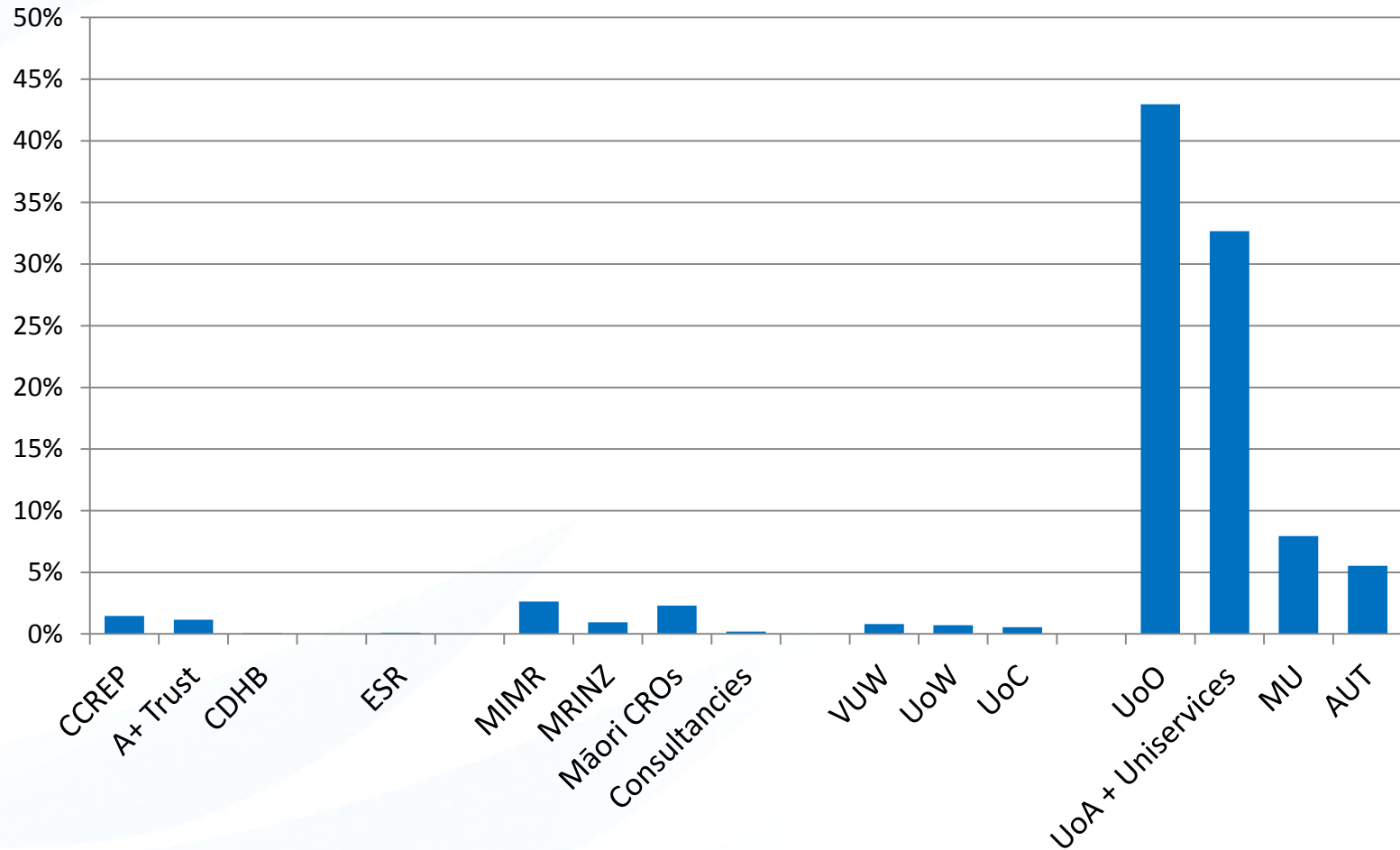
- 337 active contracts
- total value \$267.6M
- at 30 June 2011, \$195M (\pm) future commitments
- funding to 29 different research providers
 - 6 DHBs
 - 10 tertiary education agencies
 - 12 independent/community research organisations
 - ++ through subcontracts
- supporting 574 FTEs across 2302 positions

Who does health research?

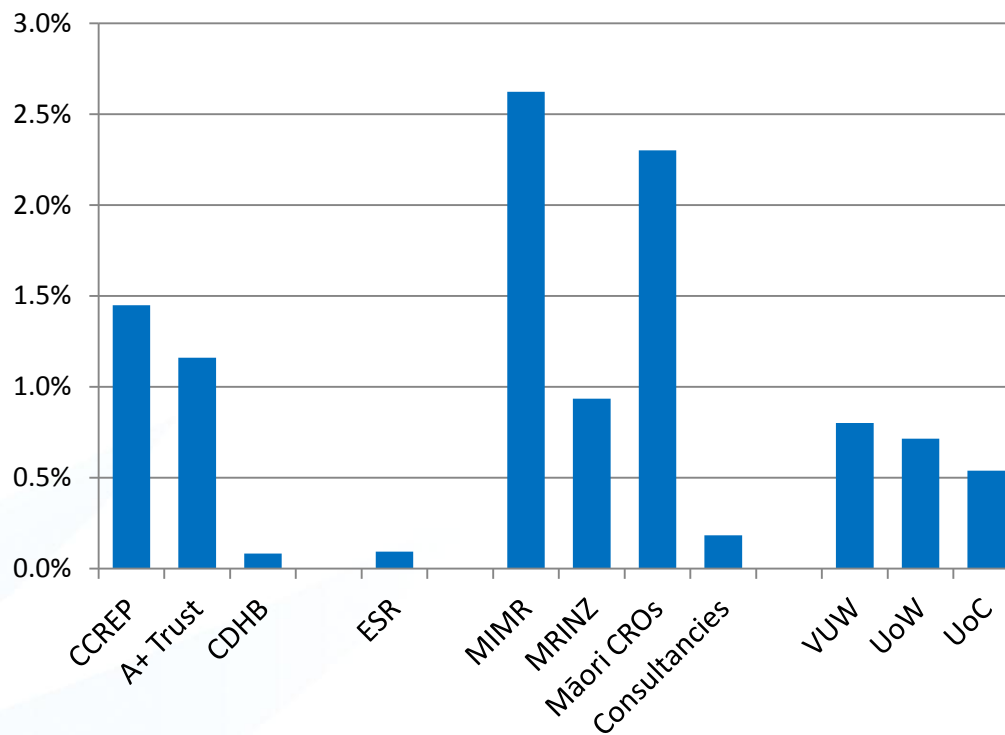
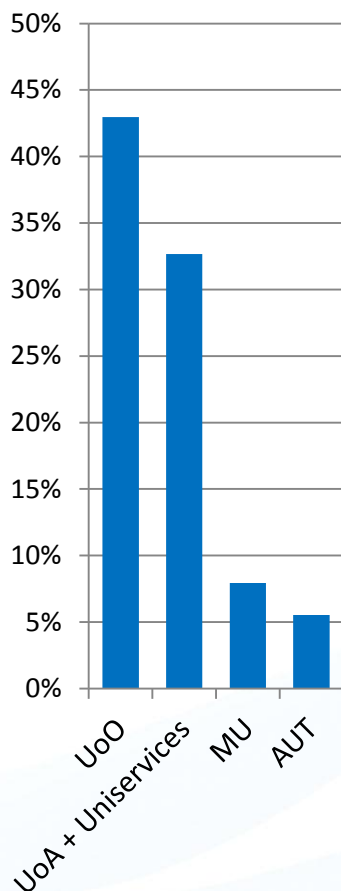
- 20 District Health Boards
- 8 Universities
- Crown Research Institutes
- Independent research organisations



Share of expenditure (Oct 2012)



Share of Oct 2012 expenditure



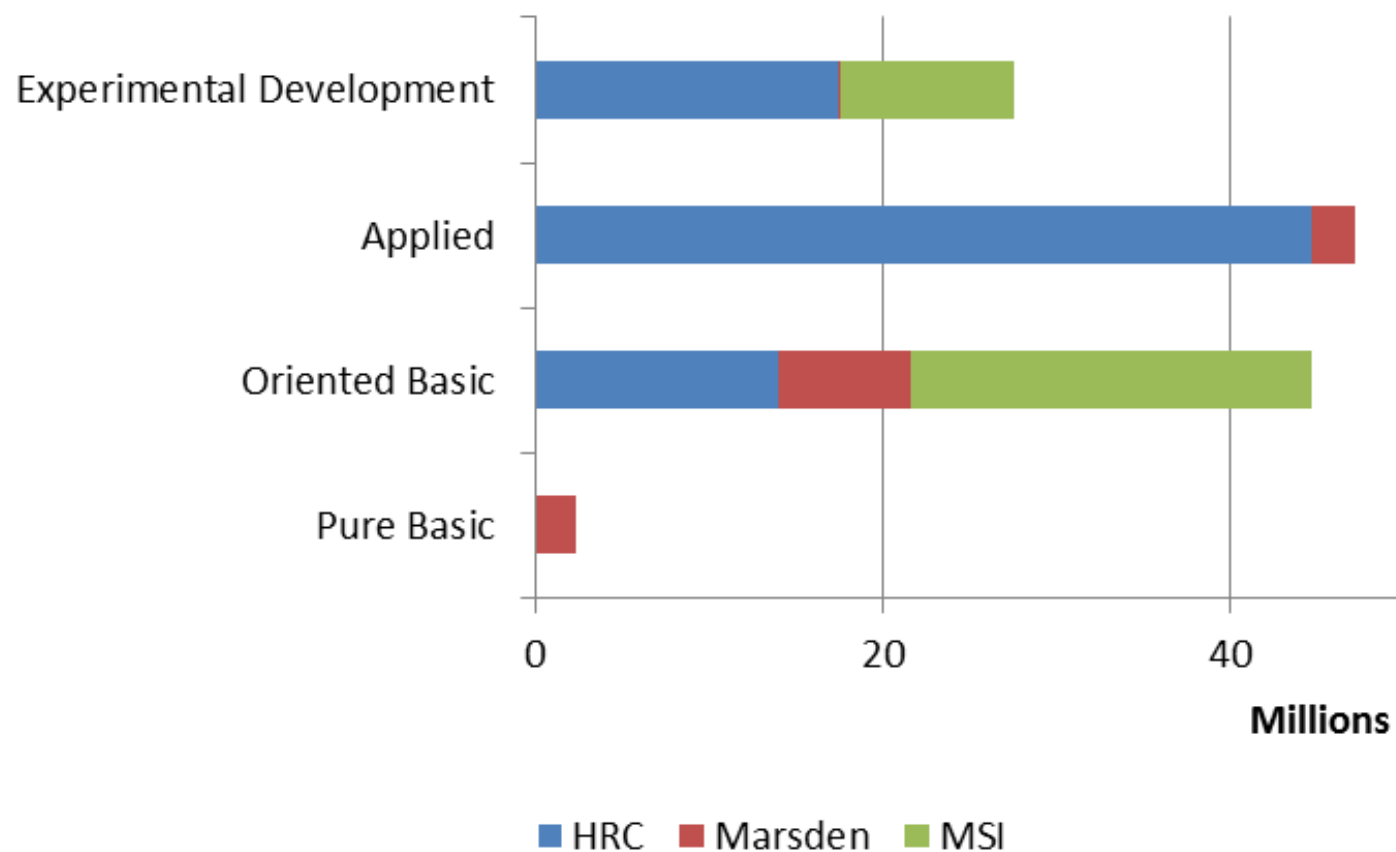
A highly skilled research workforce

- **Qualifications:** 91% of named individuals hold postgraduate degrees and over half have at least a PhD
- **Level of experience:** two-thirds of named individuals are classified as a Researcher or a Senior Researcher
- **Clinical training:** half are clinically trained and 56% of these clinicians are practising
- The male-to-female ratio is 1.07
 - 60% of Senior Researchers and Researchers are male
 - 77% of emerging researchers are women

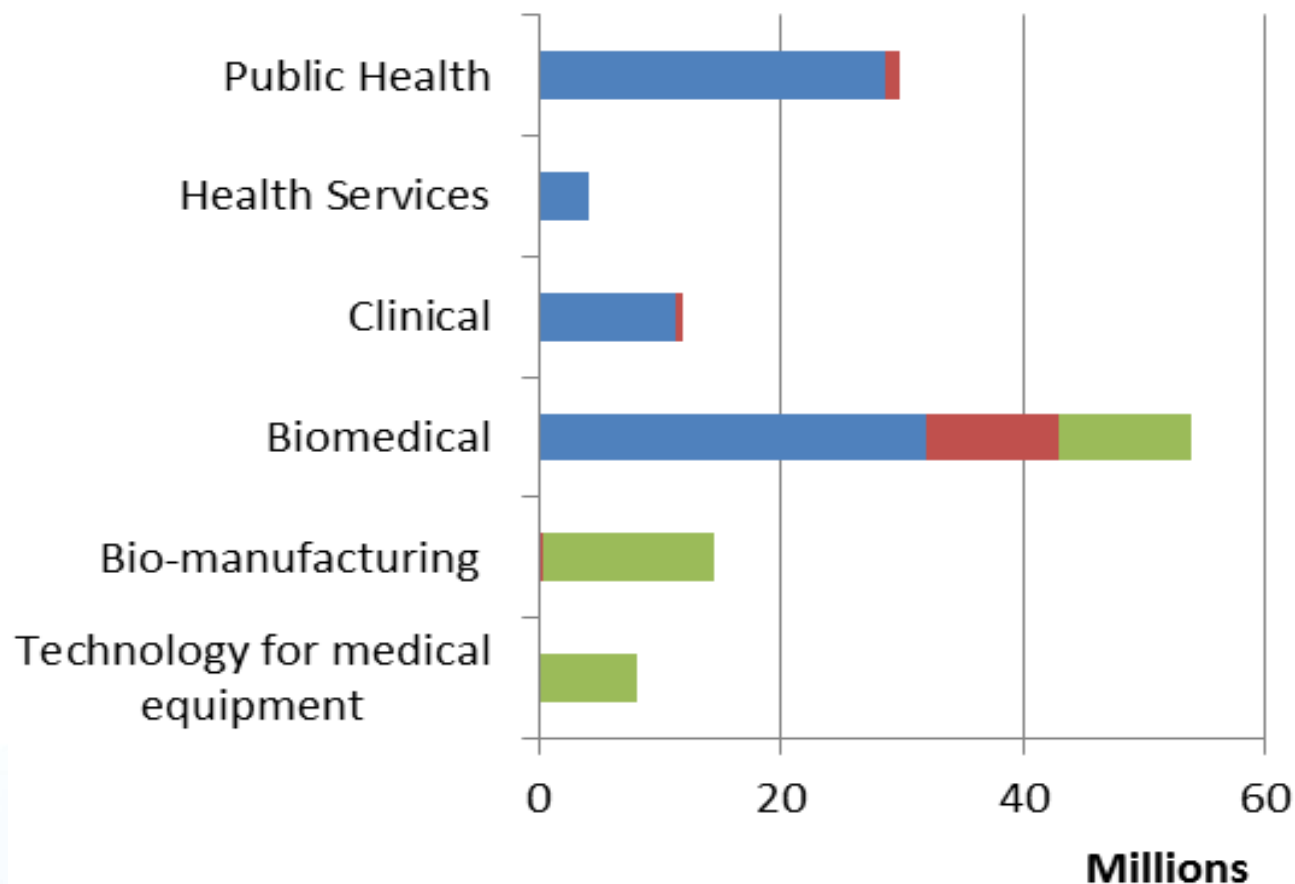
Research Investment Streams

NZ Health Delivery	Innovating & improving health service delivery & planning
Health & Wellbeing in NZ	Keeping people healthy and independent throughout life
Improving Outcomes for Acute and Chronic Conditions	Improving the understanding & management of disease and disability
Rangahau Hauora Māori	Utilising Māori knowledge & capability to address Māori health issues

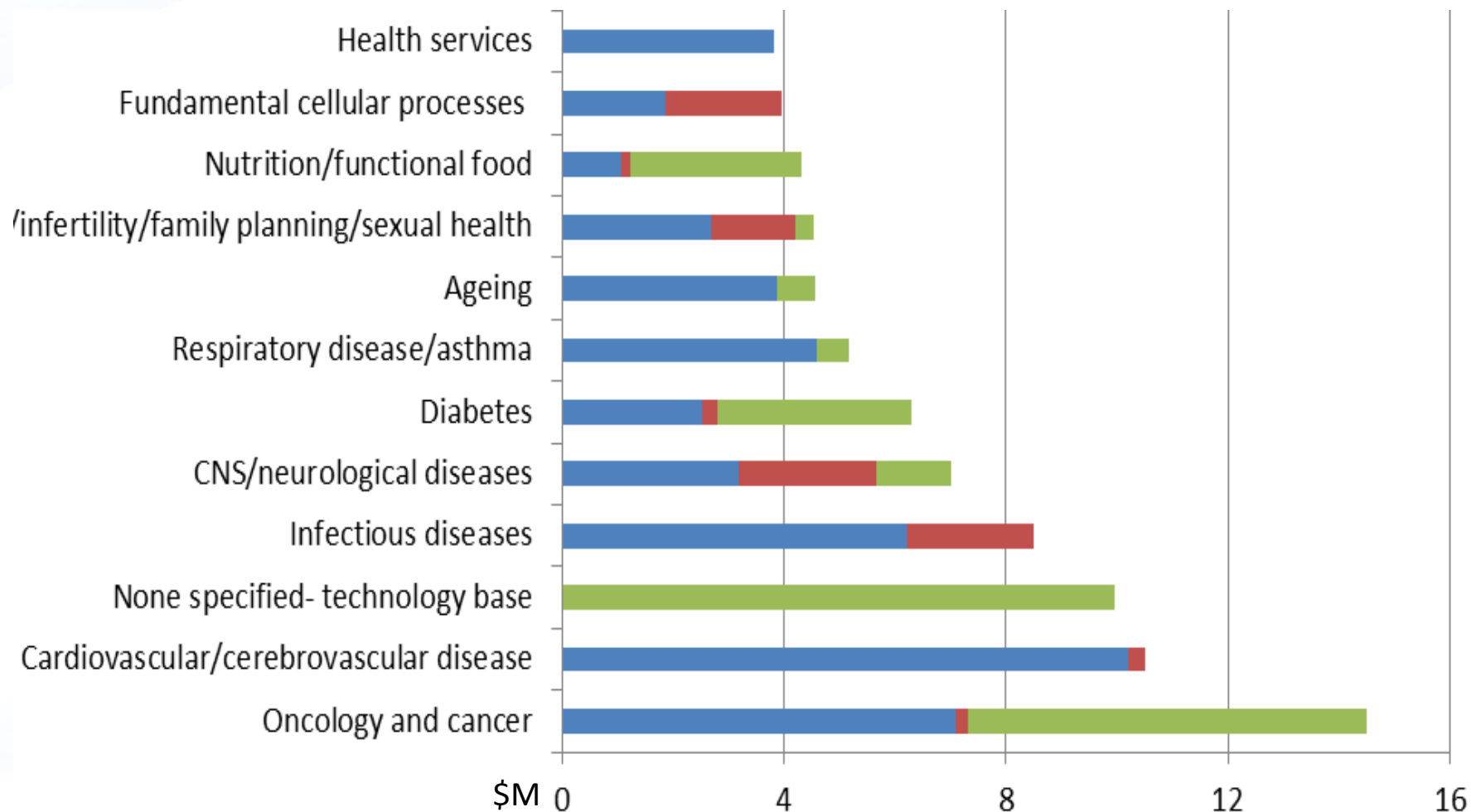
The research pipeline



Scope of investment



Major investments



1. CARDIOVASCULAR DISEASE & STROKE

Calcium signalling, computerised cardiac modelling & imaging, diagnostics, prognostics, vasoactive hormones, stroke risk & rehabilitation, heart failure, prevention & risk assessment tools.

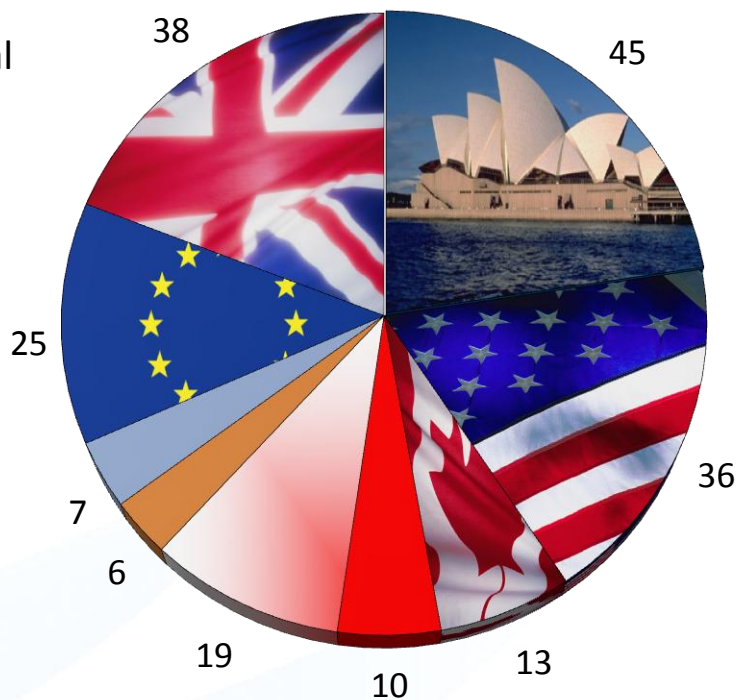
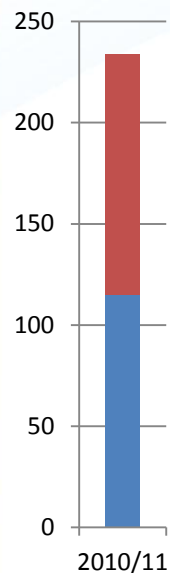
2. CANCER

Cancer genetics, tumour biology, cancer immunology (cancer vaccine), diagnostics, drug targets, hypoxia-activated prodrugs, epidemiology, disparities & inequalities in cancer incidence & outcomes.

3. DIABETES & NON-COMMUNICABLE DISEASES PREVENTION

Developmental programming, growth & development, glucose homeostasis, diabetic heart failure, diagnostics, specialist services, risk factors, nutrition, obesity, exercise, obesogenic environments, interventions in childhood.

INTERNATIONAL COLLABORATION



-  Australia
-  USA
-  Canada
-  China
-  Singapore
-  Other Asia
-  Other
-  Europe
-  United Kingdom