

The Royal Society of New Zealand

Royal Society of New Zealand
8 November 2012
By Dr Marc Rands



the ROYAL
SOCIETY *of*
NEW ZEALAND
TE APĀRANGI

History of the Royal Society of New Zealand



- In the 1860s there were scientific and philosophical societies in most of the country's main centres
- In 1867, an Act of Parliament formed The New Zealand Institute
- In 1933 the Act was amended to change the name to the Royal Society of New Zealand

Royal Society of New Zealand Today

Membership currently comprises:

- over 1200 individual members
- 371 elected Fellows
- 56 Honorary Fellows
- 10 regional branches
- 60 constituent scientific and technological societies

Represents nearly 20,000 scientists, technologists and technicians

Enables the Society to encompass a broad range of disciplines across the sciences, social science, humanities and technology.





Through its Parliamentary Act, it is mandated to:

- Encourage, promote, and recognise excellence in science, technology, and the humanities
- Provide support for the professional development of scientists, technologists and humanities scholars
- Establish and administer for members a code of professional standards and ethics in science, technology, and the humanities
- Provide expert advice on important public issues to the Government and community

Contracts managed for Government

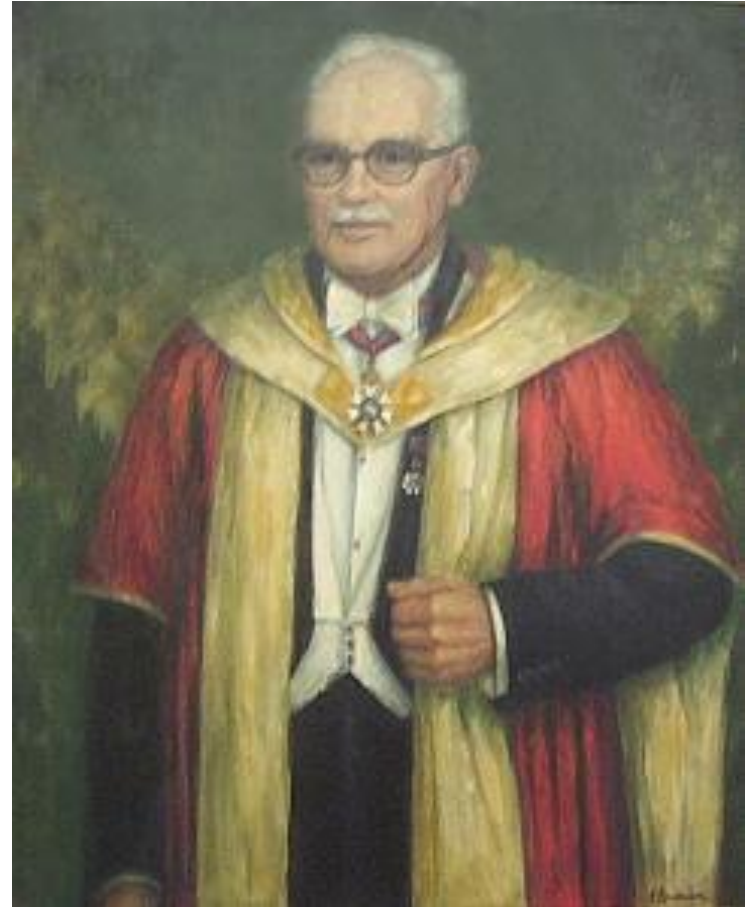
- \$54.6 Million Marsden Fund, for excellent fundamental research
- James Cook Research Fellowships
- Rutherford Discovery Fellowships
- Prime Minister's Science Prizes
- Publishing New Zealand Journals
- Creative Commons copyright licenses
- New Zealand Science & Mathematics Teacher Fellowships
- Science Media Centre
- International Research Funds
- Membership of International Associations

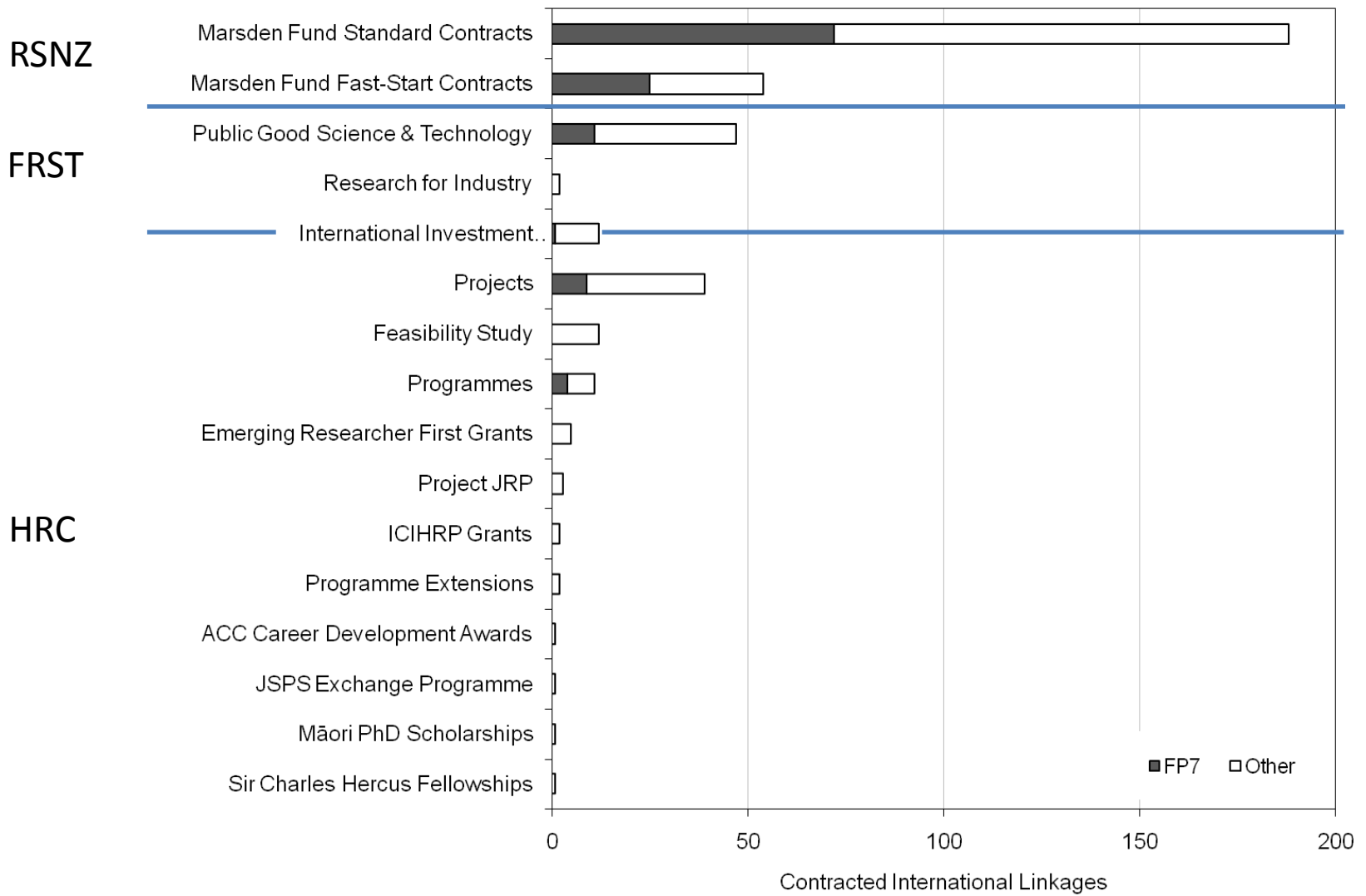


MARSDEN FUND

TE PŪTEA RANGAHAU
A MARSDEN

- Named after Sir Ernest Marsden (1889 – 1970)
- Open to proposals from all researchers in any field





Marsden contracted collaborations 2005-2010

Country	Panel											Total
	Earth Science and Astronomy	Ecology, Evolution and Behaviour	Social Sciences	Physical Sciences and Engineering	Cellular, Molecular and Physiological Biology	Biomedical Sciences	Economics and Human and Behavioural Sciences	Mathematical and Information Sciences	Humanities	Engineering and Interdisciplinary Sciences	Physics, Chemistry and Biochemistry	
New Zealand	36	42	33	22	14	15	12		8	4		186
USA	30	12	13	10	10	8	8	10	4	2	3	110
Australia	16	17	5	10	5	7	6	6	1	1	1	75
United Kingdom	18	10	12	3	10	1	2	7	5	1	1	70
Germany	9	2	1	8	7	5		4	1		1	38
Canada	3	6	5	1	2		3	4		1		25
France	1	2		5	2			1				11
The Netherlands		3		2	1		1	1				8
Japan	4			1	2							7
Belgium	2			1		1					2	6
Italy	2						2					4
Sweden		1	1		1				1			4
Austria		1			1			1				3
Chile								3				3
Finland			1		1				1			3
Ireland	1			1	1							3
Switzerland				1	2							3
Denmark		1		1								2
Fiji			1						1			2
Israel	1	1										2
South Africa		2										2
China			1									1
Mexico								1				1
Singapore			1									1
Spain		1										1
Total	123	101	74	66	59	37	37	35	22	9	8	571

International Collaboration and Travel funding

With the EU Commission

- European Cooperation in Science and Technology
- New Zealand-EU International Research Staff Exchange Scheme (IRSES)



With EU Countries

- Dumont d'Urville NZ-France S&T Support Programme
- NZ-Spain Science & Technology Programme
- Julius von Haast Fellowship Award (Germany)
- NZ-Germany Science & Technology Programme





ACCESS4EU: NZ

OPPORTUNITIES FOR EUROPEAN RESEARCHERS TO
ACCESS NEW ZEALAND'S RESEARCH SYSTEM



www.access4.eu/newzealand



the ROYAL
SOCIETY of
NEW ZEALAND
TE APĀRANGI

International Science & Technology Memberships

The RSNZ subscribes on behalf of the NZ Government to the International Council for Science (ICSU) and 32 of its constituent bodies, including:

- Association of Academies and Societies of Sciences in Asia
- International Astronomy Union
- International Council of Associations for Science Education
- International Geographic Union
- International Geosphere-Biosphere Programme
- International Mathematical Union
- International Palaeontological Association
- International Social Science Council
- International Union for Pure & Applied Chemistry
- International Union for Pure & Applied Physics
- International Union of Biological Sciences
- International Union of Geological Sciences
- Scientific Committee on Antarctic Research

PowerPoint Level Options (please delete this slide)

Top level

- Second level
 - Third level

Fourth level

- Fifth level